

Toward a Cyber Southland

Riverdale e-Village

Network Station

September 9, 2003

Toward a Cyber Southland

- Regional strategy
- Riverdale Network Station
- Riverdale e-Village
- Benefits
- Next steps
- Key to success



Network Station

- Expertly staffed, non-profit, shared-use, mixed-function facility for digital comm.
- Access to comm: Train station provides access to transportation
- Programmable functions
- Innovation center
- Engine for transition to e-Village

Riverdale Network Station

- Access to technology
- Meetings
- Virtual services
- Distributed work
- Disaster recovery



Access to Technology

- GoToMyPC
- My Docs Online, MangoMind, Xdrive
- Connected TLM
- WebEx
- AgilQuest's OnBoard
- Adobe Photoshop
- CAD

Access to Technology

- Scanners & Bar Coding
- Digital Photography
- PDAs
- Smart Cards
- Tablet PCs
- Roomware (electronic white boards)
- Wide Fidelity wireless LAN – Hot Spot





Meetings

- Face to face
- Technology assisted F2F
- Audio conference
- Two-way video conference
- One-way video, voice return
- Web meetings

The Televillage could be a place to access







Virtual Services

- Education
- Business assistance
- Workforce preparation
- Social services
- Arts, entertainment, culture
- Retail shopping

Distributed Work

- Training
- Facilities – shared work center

Disaster Recovery

- Terrorism
- Natural disaster
- Gasoline shortage
- Cyber attack
- Power outage
- Crime
- Labor dispute
- Flu epidemic
- Public policy
- System maintenance
- Road congestion
- Toxic spill





Riverdale Network Station

- 5,000 square feet
- Flexible meeting space - 3,000 s.f.
- Learning center – 1,000 s.f.
- Foyer, administration & storage – 1,000 s.f.



AS IS
FURNITURE
DISCOUNT

**PERMIT
PARKING**
THIS LOT ONLY - EXCEPTED
NO OTHERS ARE TO BE HERE

AS IS
FURNITURE
DISCOUNT

AS IS



Funding Sources

- Government transportation and economic development programs (CATS - \$250K)
- Foundations
- Corporations (transportation and IT)

Self Sustaining in 3 Years

- Advertising
- Enterprise (mailboxes, copying)
- Fee for service (return cartridges or online orders)
- Rent facility
- Value added retailing
- Membership fees
- User fees
- Fees charged to content providers
- Corp sponsors

Questions - Network Station

Current Riverdale Village

- 50K s.f. retail
- 38 businesses
- 1,100 Metra riders
- 11,000 pass-by on Metra

Transit Villages in 21st Century

- Density
- Design
- Diversity (mix of land uses, mix of activities)





TOD Plan

- Private development (rehab 15K sf, build 30K sf, 93 du over 10 years)
- Adds 15 businesses and 100 residents
- Public development (signs, bulb-outs, curb restoration, lighting, planters, landscaping, street furniture, parking, intersections, public art)





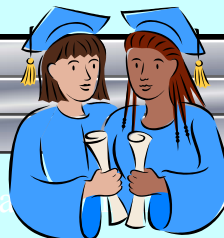
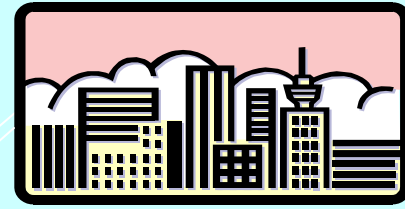
Mineta Transportation Institute

- Using Fiber Networks to Stimulate TOD: Prospects, Barriers and Best Practices
- Network Station will attract developers

Riverdale e-Village

- Rich mix of activities
 - WiFi Hot Spot
- Effective circulation system
- Modern digital economy
- TOD physical improvements

Imported Services



TOD Circulation Plan

- Accommodate automobiles (parking capacity, intersection restructuring)
- Metra
- Walking
- Cycling

e-Village Circulation

Zero Emission, Slow, Small

- Neighborhood electric vehicles
- Personal transporters (Segway)
- Electric scooters
- Golf carts
- Relieve congestion
- Reduce smog
- Energy efficient
- Reduce parking demand
- Senior safe





Digital Economy

- e-Government
(including library)
- e-Business
- Distance education,
tele-medicine
- Empowers small
groups and individuals
- Empowers small
places
- Allows large places to
seem small

Brookings Institution

Sommers and Carlson, 2/03

- What the IT Revolution Means for Regional Economic Development
- “Regions can gain substantial competitive advantages by broadening (more firms) and deepening (more applications) the impact of IT.”

Expected Benefits - Village Core

- New identity
- More to do
- Attract developers
- Attract commercial & residential tenants
- “Spread effects”

Benefits - Biz & Residents

- Capitalize biz, CBOs, government
- Access to e-commerce
- Access to workforce training
- Access to biz assistance
- Access to innovations
- Reduce digital divide
- Reduce transport & auto dependence
- Restore order

Cyber Southland

Next Steps

- Study, discuss, endorse Cyber Southland
- Fund 2 more e-Villages by spring, 2005
- Fund 3 more e-Villages by spring, 2007
- Digital Centers Plan for Southland
 - 45 e-Villages by 2013
 - 100 e-Villages by 2020

Political Tradeoffs

- Widen intersection – \$1.5 million
- Add lanes to arterial – over \$10 million per mile
- Rehab an expressway – over \$60 million per mile
- 100 e-Villages – about 2.5 miles of expressway rehab or 15 miles of street lanes

Brookings Institution

- “The profound changes being wrought by information and communications technology continue to remake how companies do business. That, in turn, determines how state and metropolitan leaders must respond in order to maintain and enhance regional economic viability.”

LEADERSHIP

Key to Success